



"AMERICA'S FAUCET COMPANY"

LIFETIME LIMITED WARRANTY

American Brass warrants this product to be leak and drip-free during normal household use for as long as it is owned by the original consumer purchaser.

Should a malfunction occur within the time covered by this warranty, replacement parts may be obtained from the place of purchase or from American Brass's Customer Service Department. American Brass will, at American Brass's discretion, provide replacement parts for installation by consumer for any parts that prove defective under normal usage and service with new, like or equivalent American Brass parts.

This warranty shall not apply to goods which have been subject to accidents, abuse, negligence, improper installation, modification, misuse, or defective due to an Act of God.

Our responsibility under this warranty is limited only to replacement of parts and no other costs including but not limited to: labor/service charges and shipping costs.

This warranty covers the original consumer purchaser only. Proof of purchase (original sales receipt) must accompany all warranty claims.



5000 Superior Avenue Cleveland, OH 44103-1238 USA

WWW.RVFAUCETS.COM



Single Handle & Two Handle Lavatory Faucet

Thank you for purchasing this American Brass product. By following the care instructions below you will enjoy this quality faucet for many years. American Brass faucets are made with the highest quality for lasting use. Since 1894, our skillfully engineered faucets have provided contemporary designs and fine finishes to complement homes across America.

Our products also offer water & energy saving features.

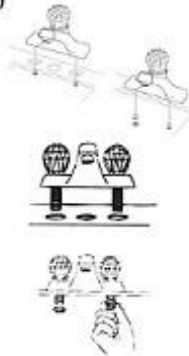
Please visit us online to learn more about our company and product offerings:

WWW.RVFAUCETS.COM

INSTALLATION INSTRUCTIONS

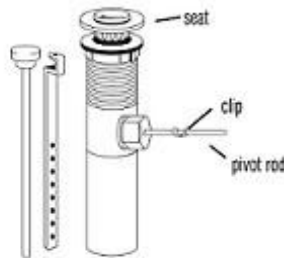
TO INSTALL SINGLE AND DOUBLE HANDLE FAUCETS: (BATH)

1. Turn off water supply.
2. Position faucet on the sink. From underneath sink secure faucet with mounting nuts. Hand tighten nuts. Check faucet position, then wrench tighten.
3. Apply thread seal tape or pipe thread compound to male faucet threads. Attach water supply lines to faucet and valves.
4. Install pop-up assembly.
5. Make sure all connections are tight and turn on water supply.
6. Unscrew and remove aerator. Turn on water and check for leaks. Run hot and cold water uninterrupted for about one minute to remove any residue from the lines. Replace aerator.



TO INSTALL POP-UP ASSEMBLY:

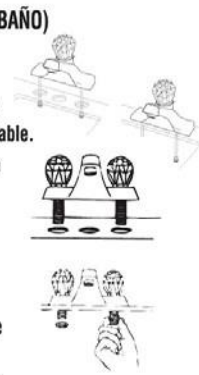
1. Thread mounting nut and bottom gasket onto drain body. Wrap top threaded end of the drain body with thread seal tape.
2. Insert drain body through the drain opening and screw seat onto drain body. Hold the drain body with the pivot rod opening facing the back of the sink. Hand tighten the mounting nut. Insert pop-up stopper.
3. Place pivot rod in proper opening. Slide pivot nut over rod and thread nut onto drain body. Tighten firmly but do not overtighten.
4. With lift rod in position in the faucet, insert lift rod through lift rod strap and secure with set screw.
5. Guide the pivot rod through any hole on the lift rod strap and secure it with the spring clip. Adjust the height of the lift rod by resetting the set screw.



INSTRUCCIONES PARA LA INSTALACIÓN

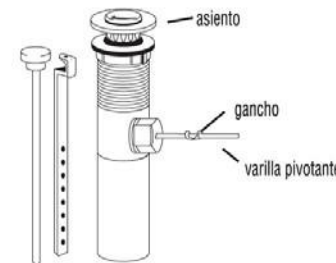
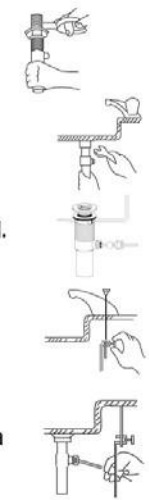
PARA INSTALAR GRIFOS MONOMANDO O DE DOS MANIJAS: (BAÑO)

1. Cierre el suministro de agua.
2. Coloque el grifo en el lavamanos. Desde la parte de abajo del lavamanos fije el grifo con las tuercas de montaje. Apriete las tuercas a mano. Revise la posición del grifo, luego apriete con una llave ajustable.
3. Aplique cinta para sellar roscas o compuesto para roscas de tubería a las roscas macho del grifo. Fije las tuberías de suministro al grifo y a las válvulas.
4. Instale el tapón retráctil.
5. Cerciórese de que todas las conexiones estén ajustadas y abra el suministro de agua.
6. Desatornille y retire el aireador. Abra el suministro de agua y revise si hay fugas. Deje correr el agua caliente y fría ininterrumpidamente durante aproximadamente un minuto para retirar cualquier residuo de las tuberías. Vuelva a colocar el aireador.



PARA INSTALAR EL ENSAMBLE DEL TAPÓN RETRÁCTIL:

1. Enrosque la tuerca de montaje y la empaquetadura inferior en el desagüe. Envuelva el extremo roscado del desagüe con cinta para sellar roscas.
2. Introduzca el conducto de desagüe en su abertura y atornille el asiento en dicho conducto. Sostenga el conducto de drenaje con la abertura de la varilla pivotante orientada hacia la parte posterior del lavamanos. Apriete a mano la tuerca de montaje. Inserte el tapón retráctil.
3. Coloque la varilla pivotante en la abertura adecuada. Deslice la tuerca del pivote sobre la varilla y enrosque la tuerca en el conducto de drenaje. Apriete firmemente pero no excesivamente.
4. Con la varilla para elevar en posición en el grifo, insértela a través de la placa chata para la varilla y asegúrela con el tornillo de fijación.
5. Guíe la varilla del pivote a través de cualquier agujero en la placa chata de la varilla para elevar y fíjelo con el gancho. Ajuste la altura de la varilla recolocando el tornillo de fijación.



Avoid polish or harsh abrasives on finishes! Use damp cloth to clean.



Please Conserve Water!

